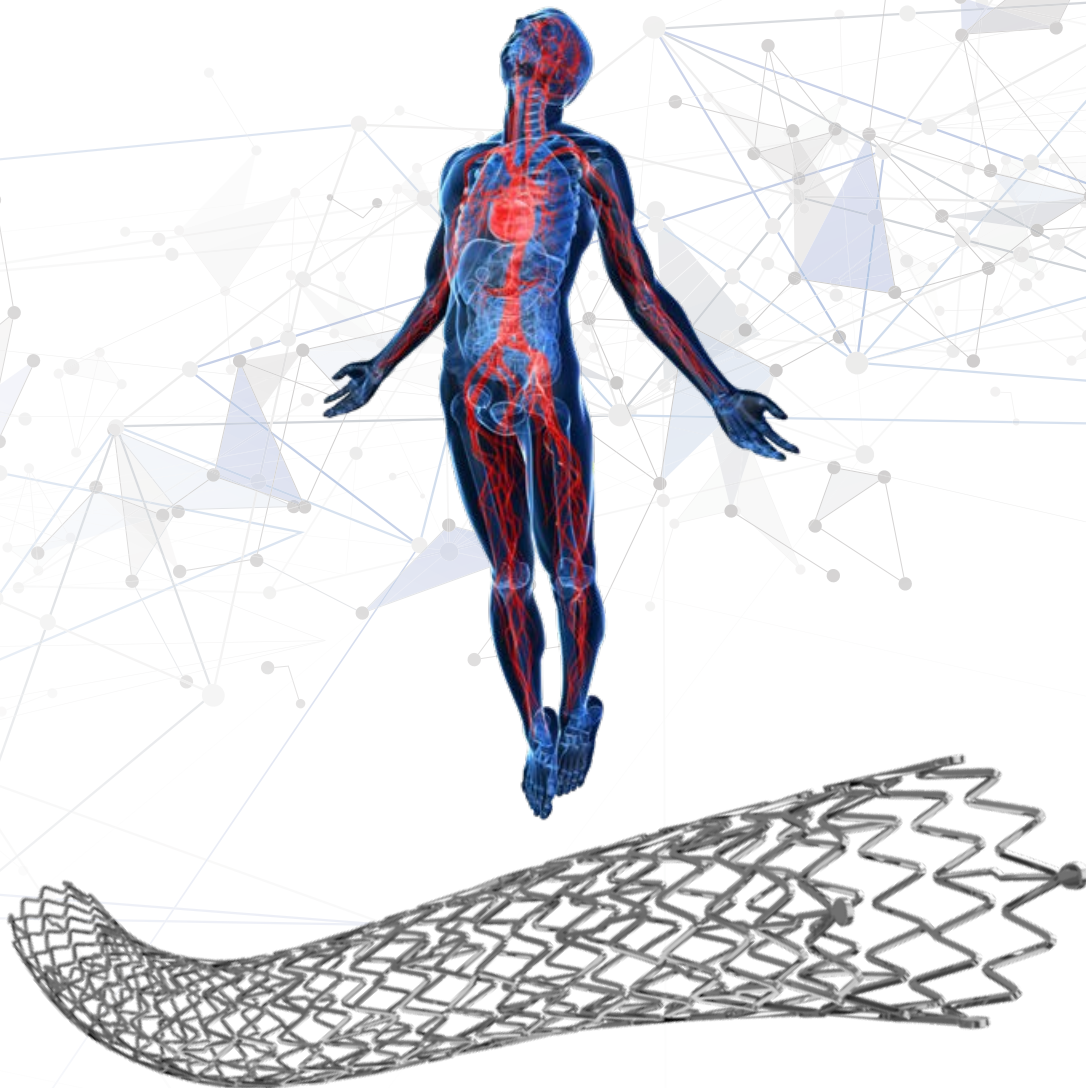




PSpp

Peripheral Vascular Self Expanding Stent
Pin Pull



Highly durable bi-directional nitinol stent
with a flexible pin pull delivery system

Up To **6F**

The **PSpp** Peripheral Vascular Self Expanding Stent System combines **highly durable** nitinol stent with a **flexible delivery system** to provide **proven clinical results**¹.

ACCURACY & EASE OF USE

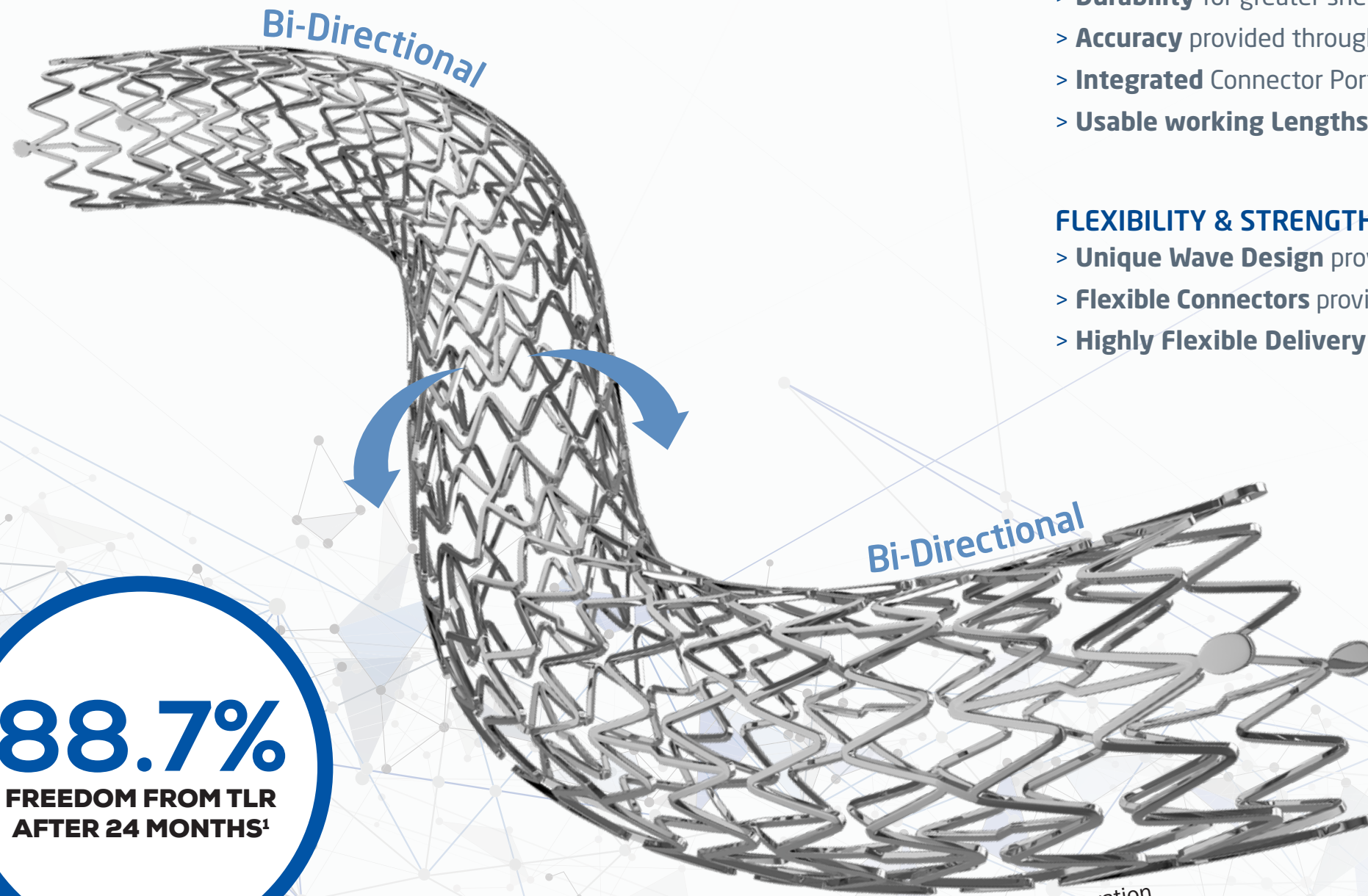
- > **Nitinol Stent** with tantalum markers provides excellent visibility under fluoroscopy
- > **Minimal Foreshortening** ensures accurate positioning and placement
- > **Delivery Catheter** ensures accurate and easy 1:1 delivery

ENHANCED CATHETER

- > **Durability** for greater shelf life and improved pushability
- > **Accuracy** provided through lower deployment force for more accurate stent placement
- > **Integrated Connector Port** for ease of flushing and injection of contrast material
- > **Usable working Lengths** of 80 and 120 cm, guided over 0.035" guidewire

FLEXIBILITY & STRENGTH

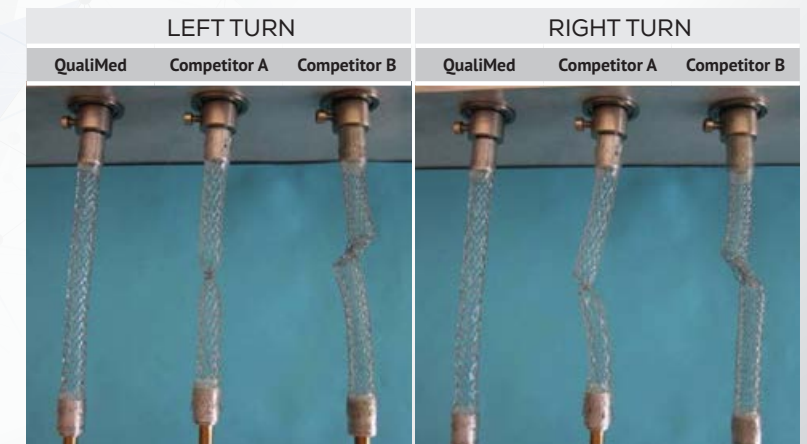
- > **Unique Wave Design** provides flexibility without sacrificing radial strength
- > **Flexible Connectors** provide high resistance against bending, torsion, and compression stress
- > **Highly Flexible Delivery Catheter** facilitates navigation of tortuous anatomy



88.7%
FREEDOM FROM TLR
AFTER 24 MONTHS¹

New Product Innovation
Peripheral Vascular Stent

TORSION AND DIRECTIONALITY TESTING One Full Turn



¹. Stents with Torsional Strength for Superficial Femoral Artery Disease - The prospective Q3-Registry by Thieme et al. Journal of Endovascular Therapy. 2022. (Impact factor 3.487 source Sage Journals)

TECHNICAL SPECIFICATIONS

Stent

Description	Self-Expandable Nitinol Stent
Material	Nickel titanium alloy
Diameter	5.0 6.0 7.0 8.0 9.0 10.0 11.0 mm
Lengths	20 40 60 80 100 120 150 175 200 mm
Visibility	4 x-ray markers at each end Tantalum

Stent Delivery System

Recommended Guidewire	0.035" (0.90 mm)
Recommended Introducer	6 F
Usable Catheter Lengths	80 cm and 120 cm
Delivery Device	Pin Pull Delivery System

ORDER INFORMATION

Usable Catheter Length **80 cm**

Diameter (mm)	Stent Length (mm)								
	20	40	60	80	100	120	150	175	200
5	08 APS 05020	08 APS 05040	08 APS 05060	08 APS 05080	08 APS 05100	08 APS 05120	08 APS 05150	08 APS 05175	08 APS 05200
6	08 APS 06020	08 APS 06040	08 APS 06060	08 APS 06080	08 APS 06100	08 APS 06120	08 APS 06150	08 APS 06175	08 APS 06200
7	08 APS 07020	08 APS 07040	08 APS 07060	08 APS 07080	08 APS 07100	08 APS 07120	08 APS 07150	08 APS 07175	08 APS 07200
8	08 APS 08020	08 APS 08040	08 APS 08060	08 APS 08080	08 APS 08100	08 APS 08120	08 APS 08150	08 APS 08175	08 APS 08200
9	08 APS 09020	08 APS 09040	08 APS 09060	08 APS 09080	08 APS 09100	08 APS 09120	08 APS 09150		
10	08 APS 10020	08 APS 10040	08 APS 10060	08 APS 10080	08 APS 10100	08 APS 10120	08 APS 10150		
11	08 APS 11020	08 APS 11040	08 APS 11060	08 APS 11080	08 APS 11100	08 APS 11120	08 APS 11150		

Usable Catheter Length **120 cm**

Diameter (mm)	Stent Length (mm)								
	20	40	60	80	100	120	150	175	200
5	12 APS 05020	12 APS 05040	12 APS 05060	12 APS 05080	12 APS 05100	12 APS 05120	12 APS 05150	12 APS 05175	12 APS 05200
6	12 APS 06020	12 APS 06040	12 APS 06060	12 APS 06080	12 APS 06100	12 APS 06120	12 APS 06150	12 APS 06175	12 APS 06200
7	12 APS 07020	12 APS 07040	12 APS 07060	12 APS 07080	12 APS 07100	12 APS 07120	12 APS 07150	12 APS 07175	12 APS 07200
8	12 APS 08020	12 APS 08040	12 APS 08060	12 APS 08080	12 APS 08100	12 APS 08120	12 APS 08150	12 APS 08175	12 APS 08200
9	12 APS 09020	12 APS 09040	12 APS 09060	12 APS 09080	12 APS 09100	12 APS 09120	12 APS 09150		
10	12 APS 10020	12 APS 10040	12 APS 10060	12 APS 10080	12 APS 10100	12 APS 10120	12 APS 10150		
11	12 APS 11020	12 APS 11040	12 APS 11060	12 APS 11080	12 APS 11100	12 APS 11120	12 APS 11150		